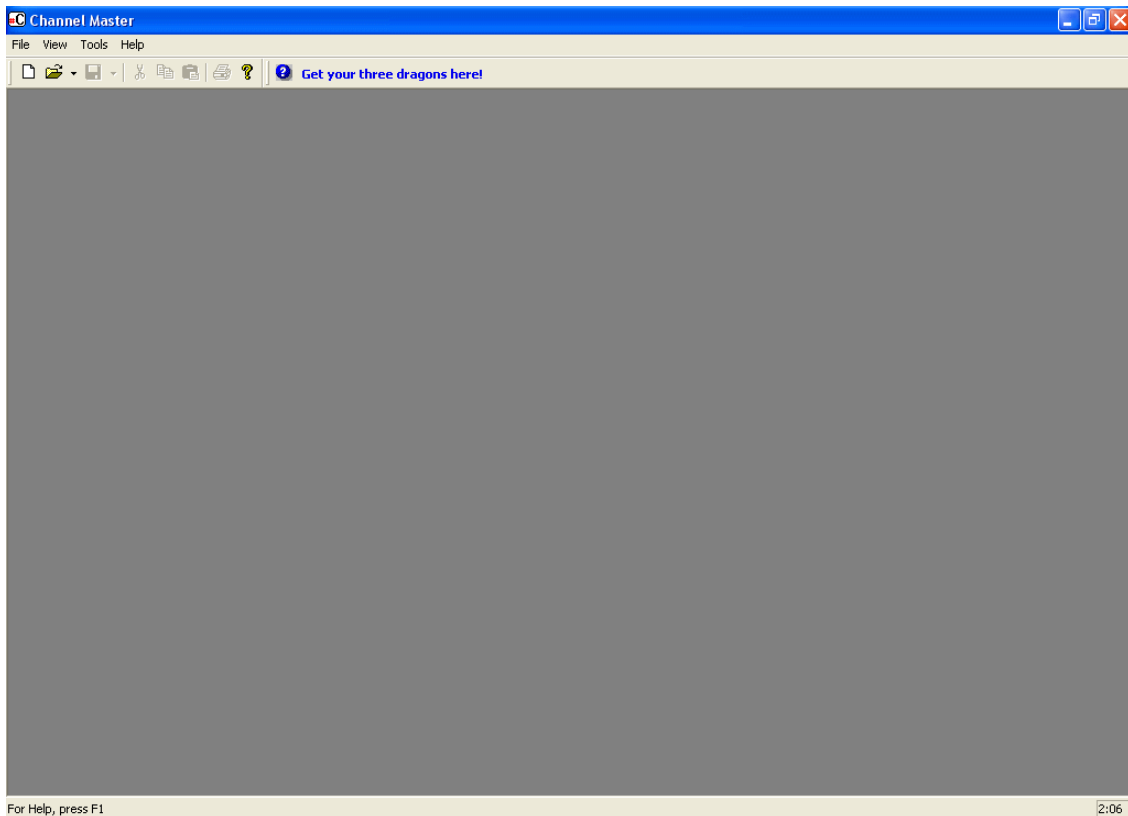


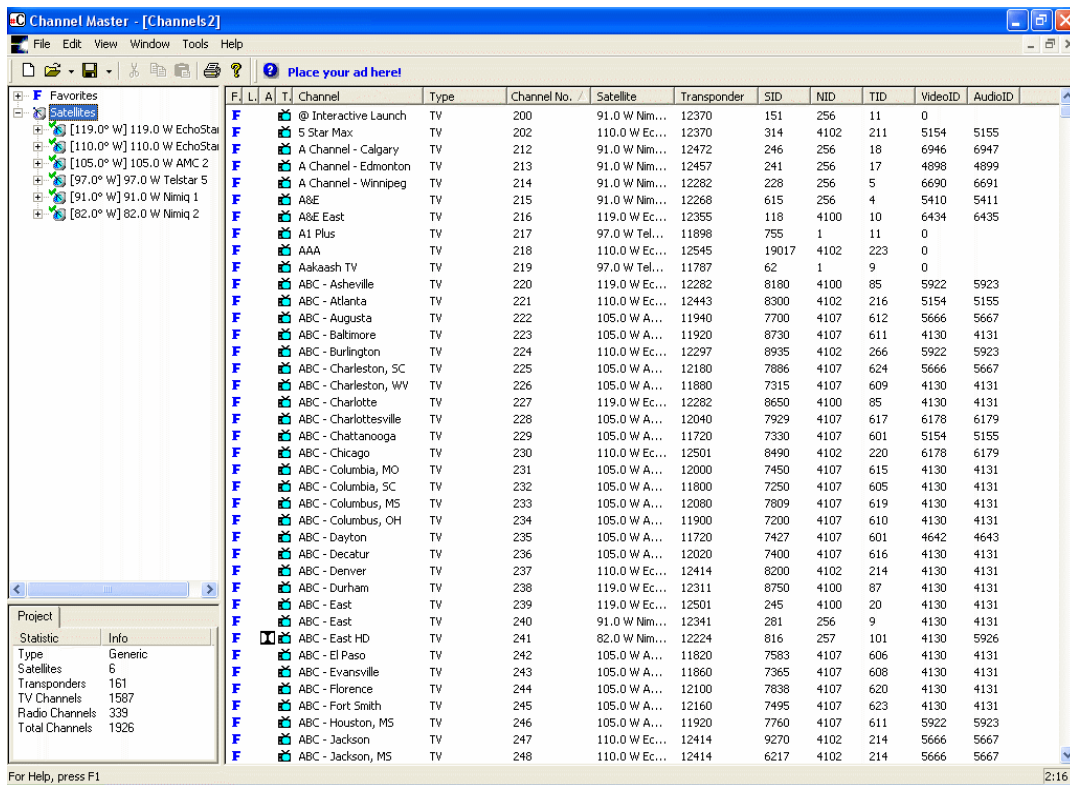
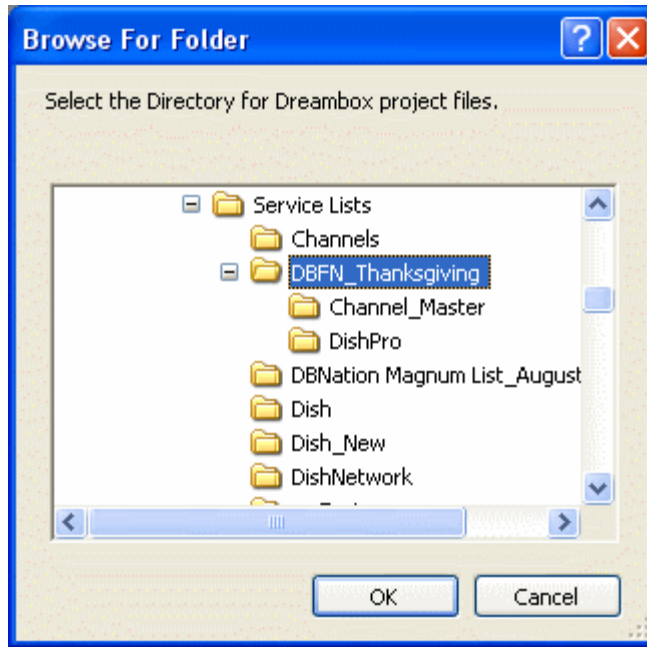
Channel Master for Newbies 1.11 for DGStation

Using Channel Master to Export from one channel list type to another.

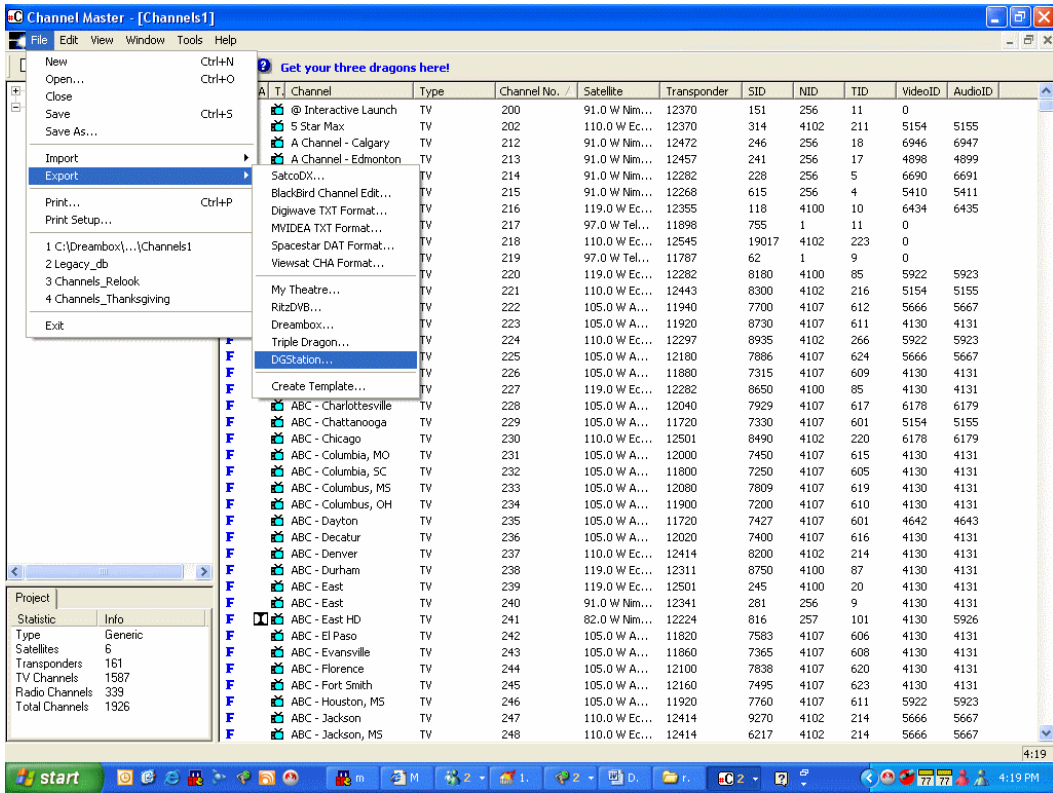
1. Open **Channel Master** and close out the current channel list.



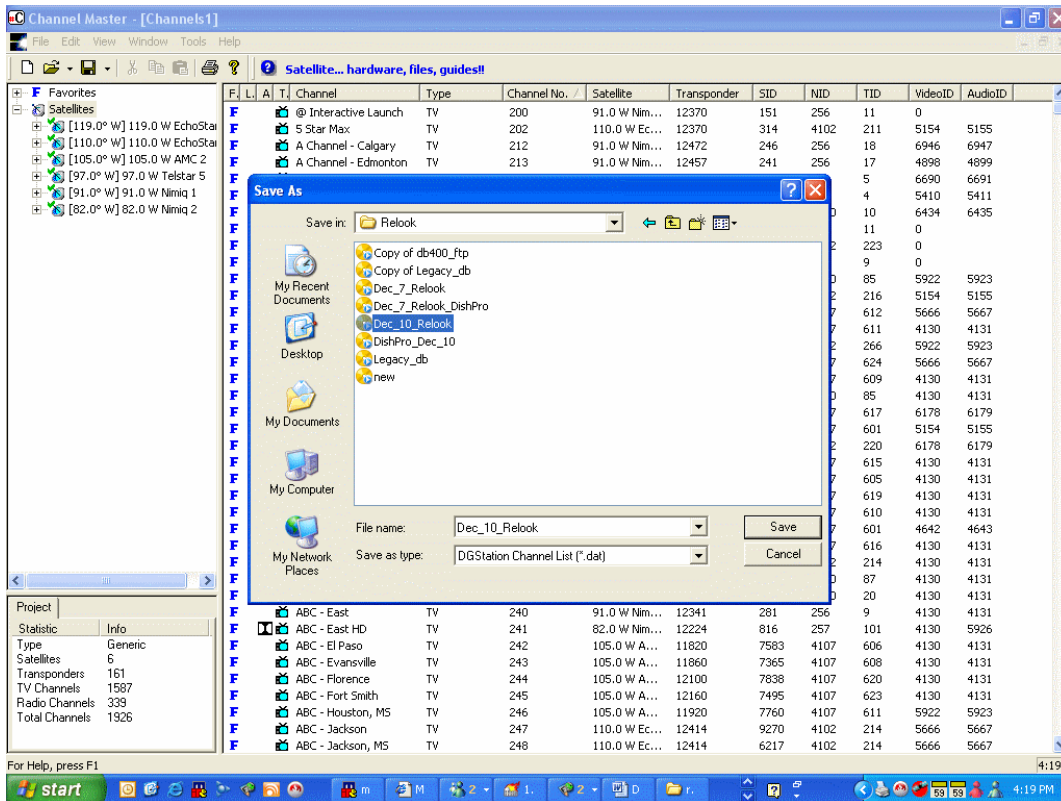
2. Import the channel list of your choice which may be your **Relook/Mutant** scan. It will be quicker to import a channel list with the names as you like them and a favorite list the way you want yours arranged. I used a DreamBox list in this example. Otherwise you can make a [template](#) from your favorite channel list and apply it to rename and place your channels into **Favorites**. You can also [convert](#) this list to DishPro LNBS with Channel Master.



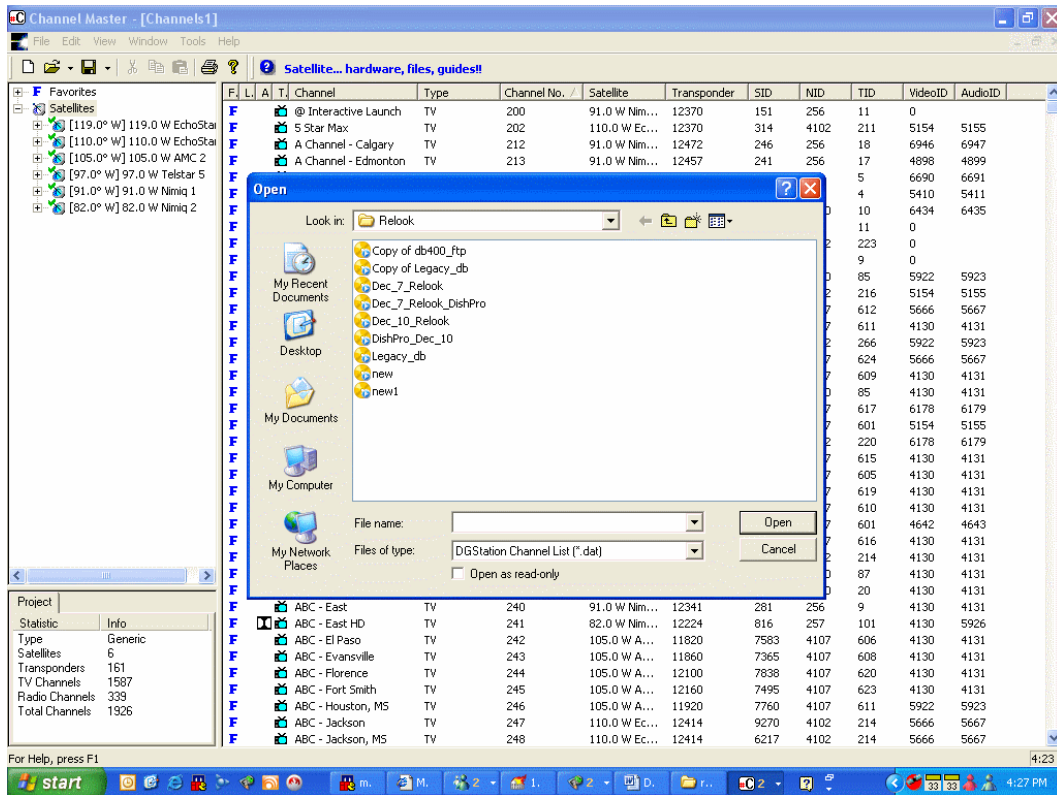
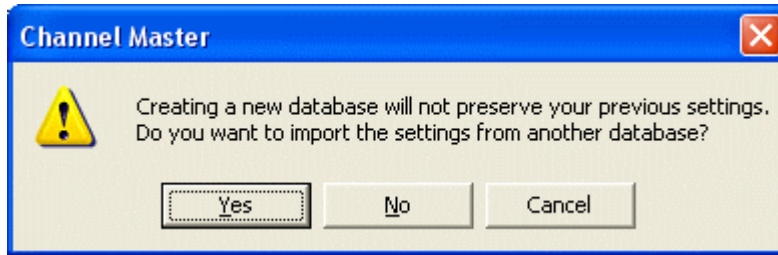
3. Apply the template you have previously created or use this list if it is already named and in Favorite Lists like you like.
4. Choose **Export to DGStation**.



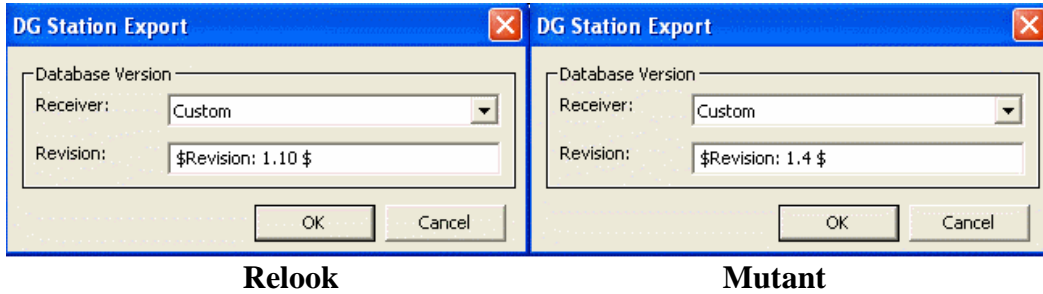
5. Select a name and location for this list and Save.



- Be sure to **import** your configuration settings from the database that was on your **Relook** or **Mutant**. (You should have already downloaded the database from your **Relook** or **Mutant**. You can download the database file from your Relook by **FTP** using **Jon Doe's PCEditor** or with any FTP client. You can also download by **USB cable** and **PCEditor**.) Select the database that you obtained from your **Mutant** or **Relook** by **FTP** or by using a cable and **PCEditor**.



7. Select the correct Database Version for your **Relook** or **Mutant**.



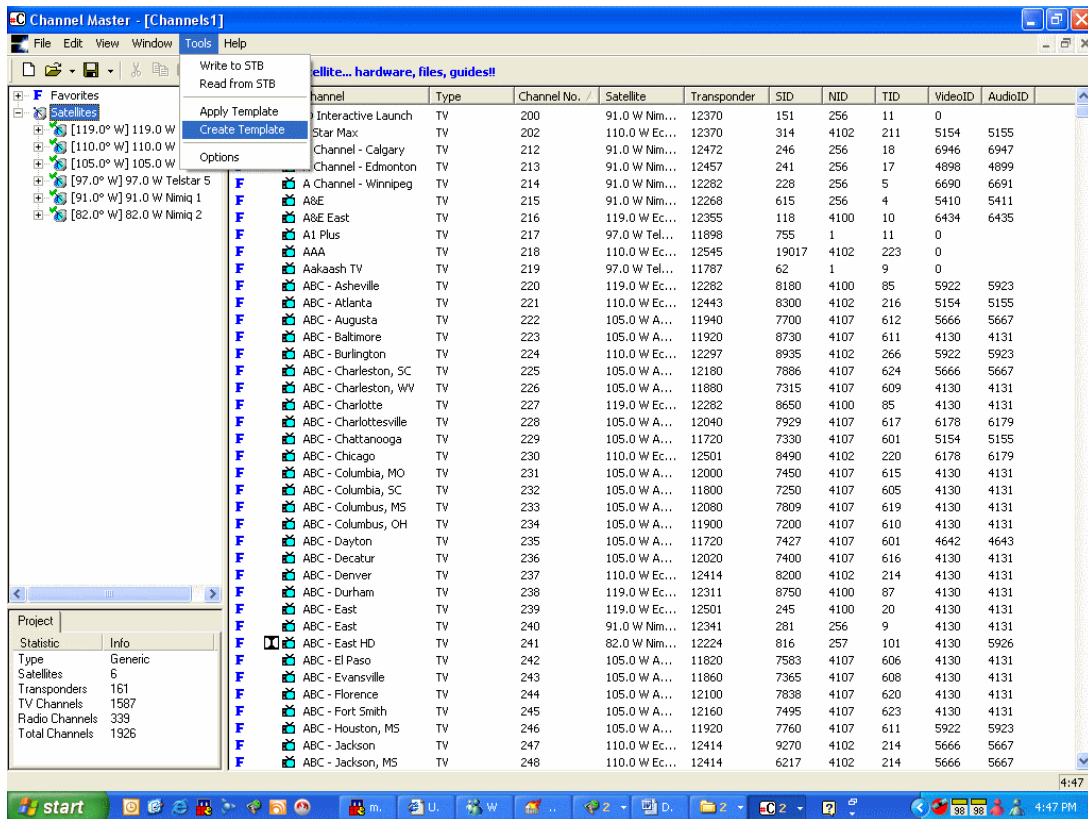
8. You will get a message saying you were successful.



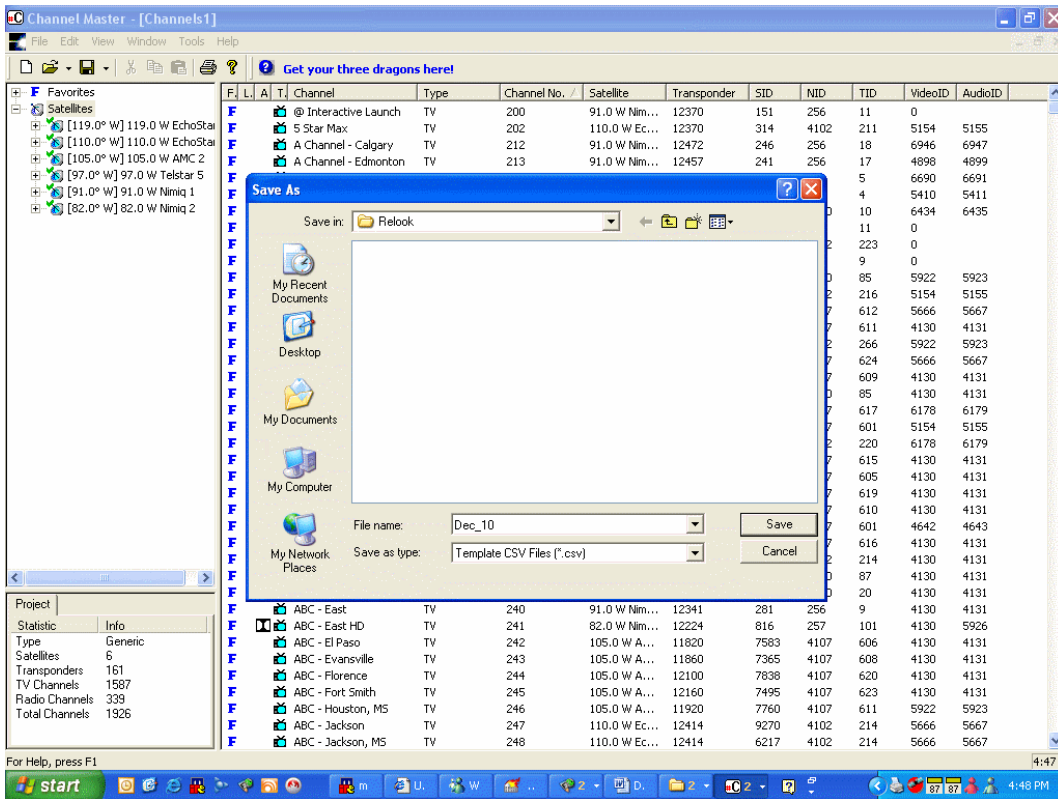
Using Channel Master to Create and Apply Templates.

Tip: Why would I choose this method over the first? This allows you to do a brand new scan with your own receiver and apply a template from a previous list whose arrangement and naming you really like. The new scan will reflect any changes in the transponders and the template will give this new scan your old names and Favorite list arrangement.

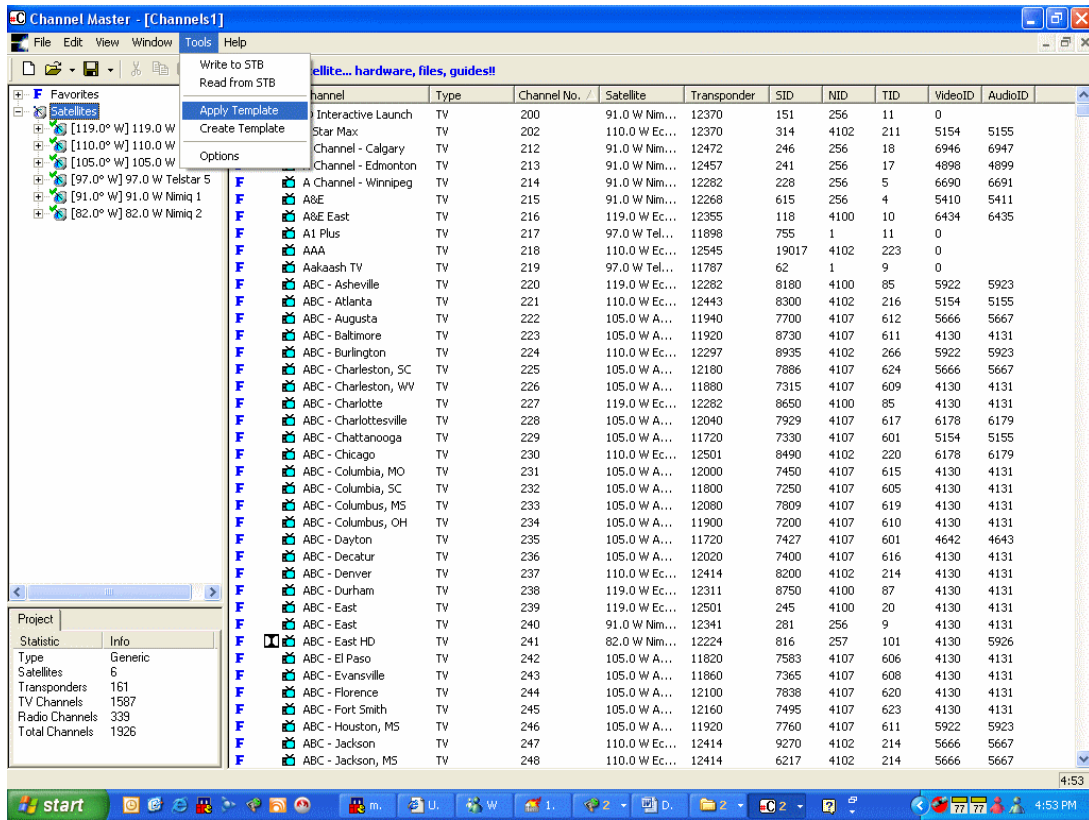
1. Open **Channel Master** and close the channel list that is opened.
2. Import your favorite channel list from any receiver.
3. Go to **Tool** and then select **Create Template**.



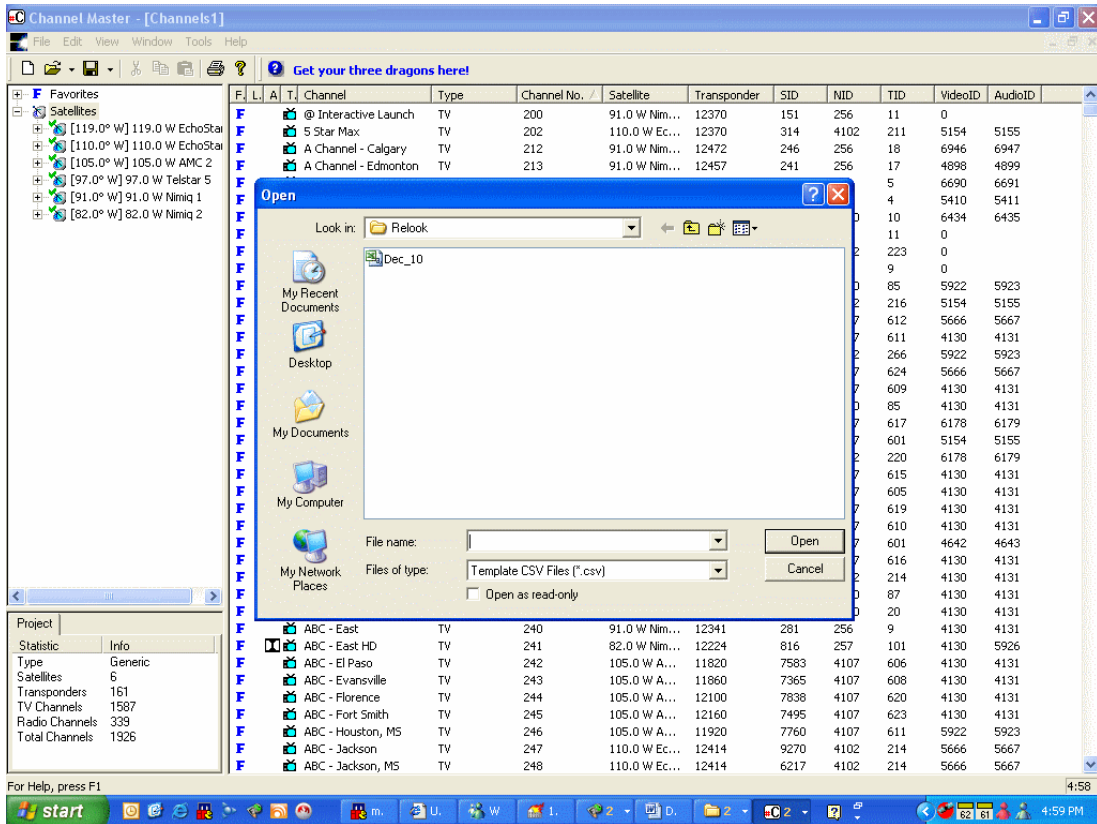
4. Select a location for saving.



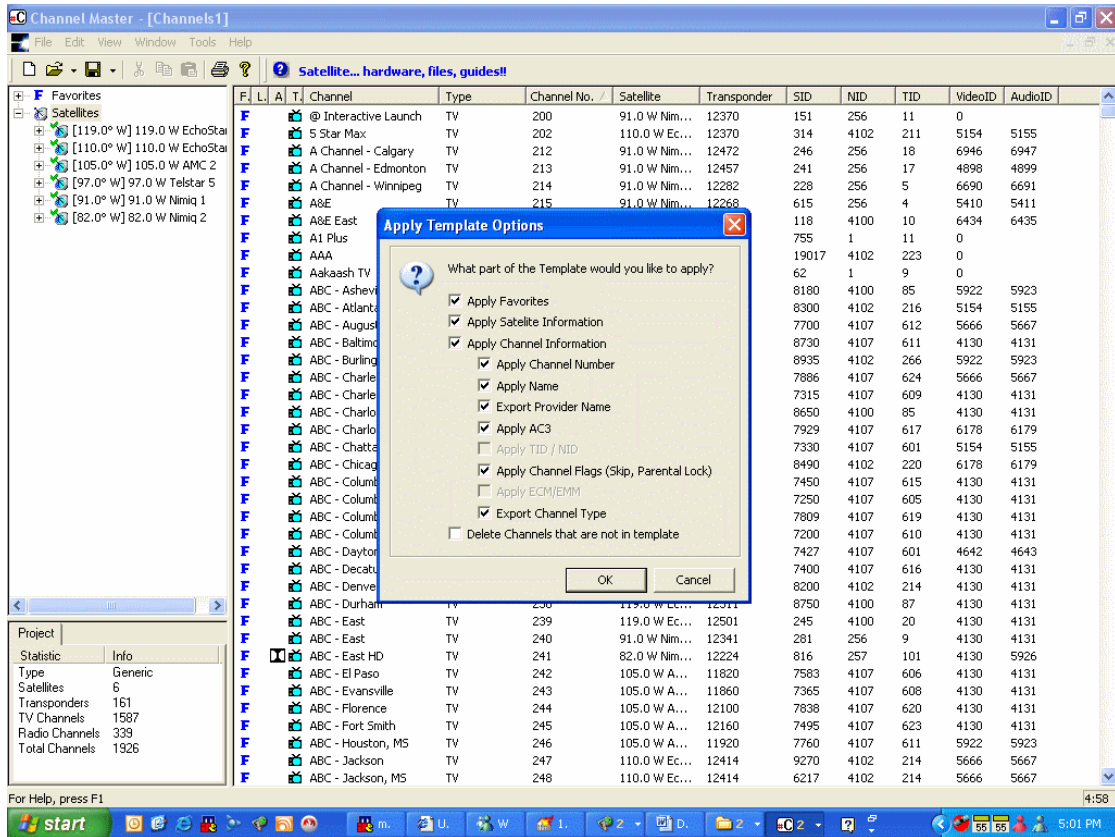
5. To apply this template you will open up the channel list of your choice.
6. Go to **Tool** and then select **Apply Template**.



7. Select name and location of the database you are saving.



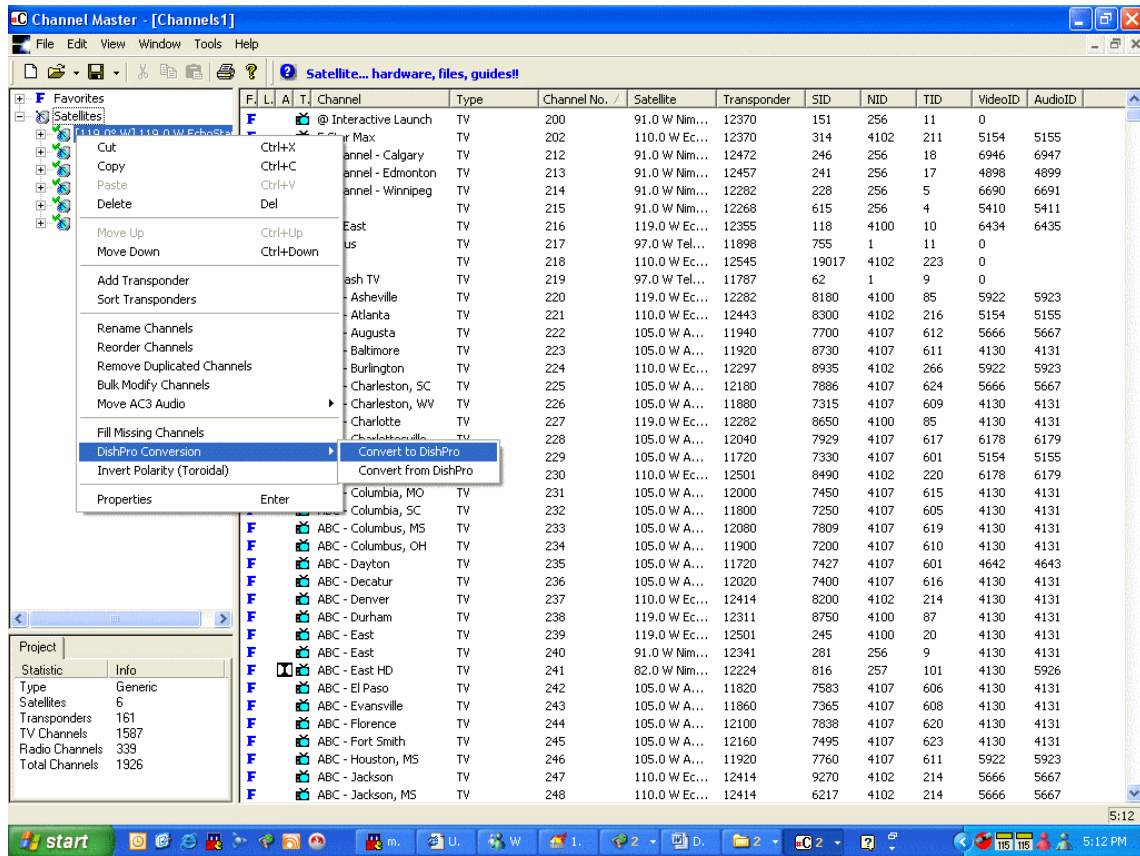
8. Apply Template Options.



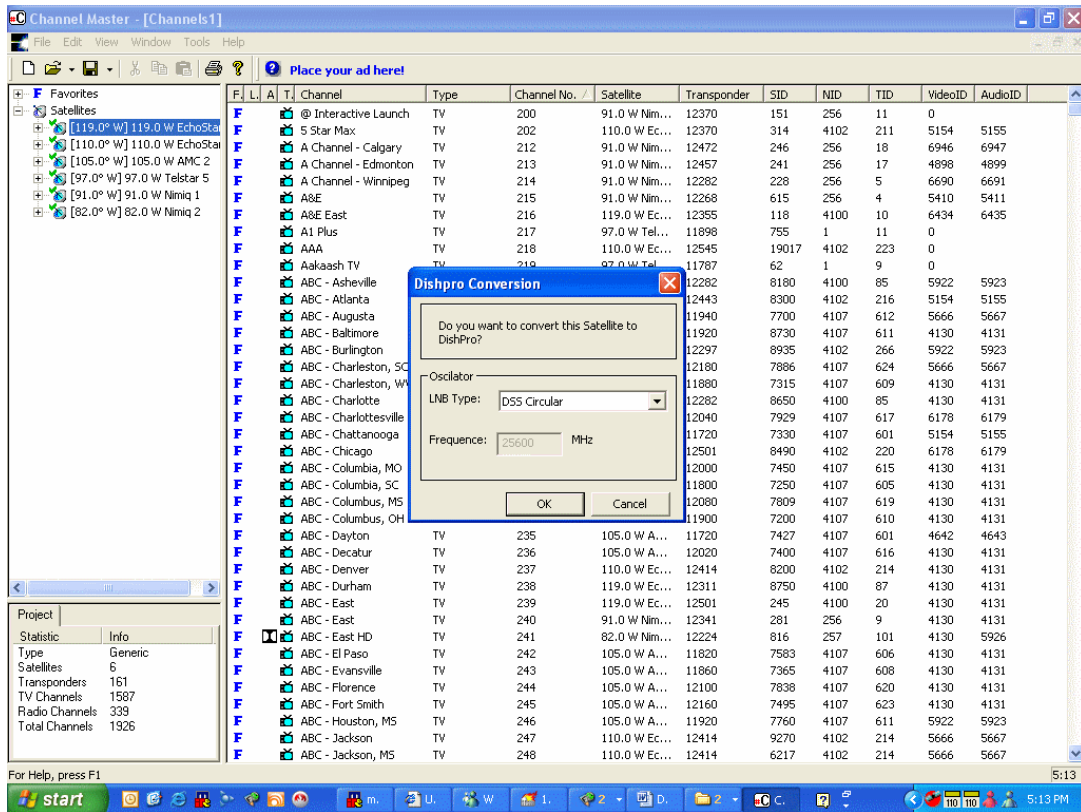
9. This gives you a channel list with the satellite names and Favorite arrangement exactly like the original template list.
10. You can then [export](#) as described above.

Using Channel Master to Convert a Standard Channel List to a DishPro List.

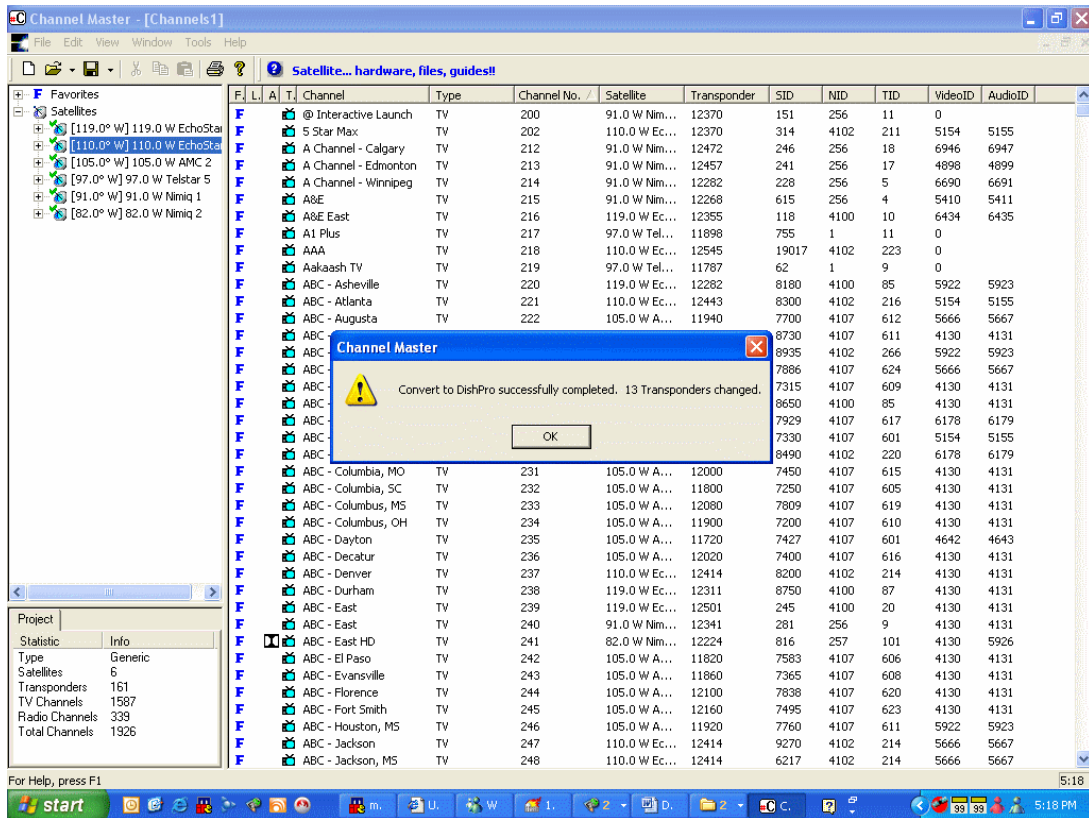
1. Open the list of your choice in **Channel Master**.
2. Right click on the satellite that you want to convert on the left side of the screen. Choose **DishPro Conversion** and then **Convert to DishPro**.



3. Select **Circular** or the first of the two **Linears** on the list. Most of the satellites of interest are circular.



4. Give the **Conversion** your **OK**.
5. You will be told that the conversion was successful.



- The DGStation products contain a database file with transponder information and they have chosen to work with DishPro LNBs a little differently than everyone else. Converting transponder polarity from Vertical to Horizontal increases the voltage sent to the LNB. We can do that with Channel Master by choosing Invert Polarity (Toroidal).

