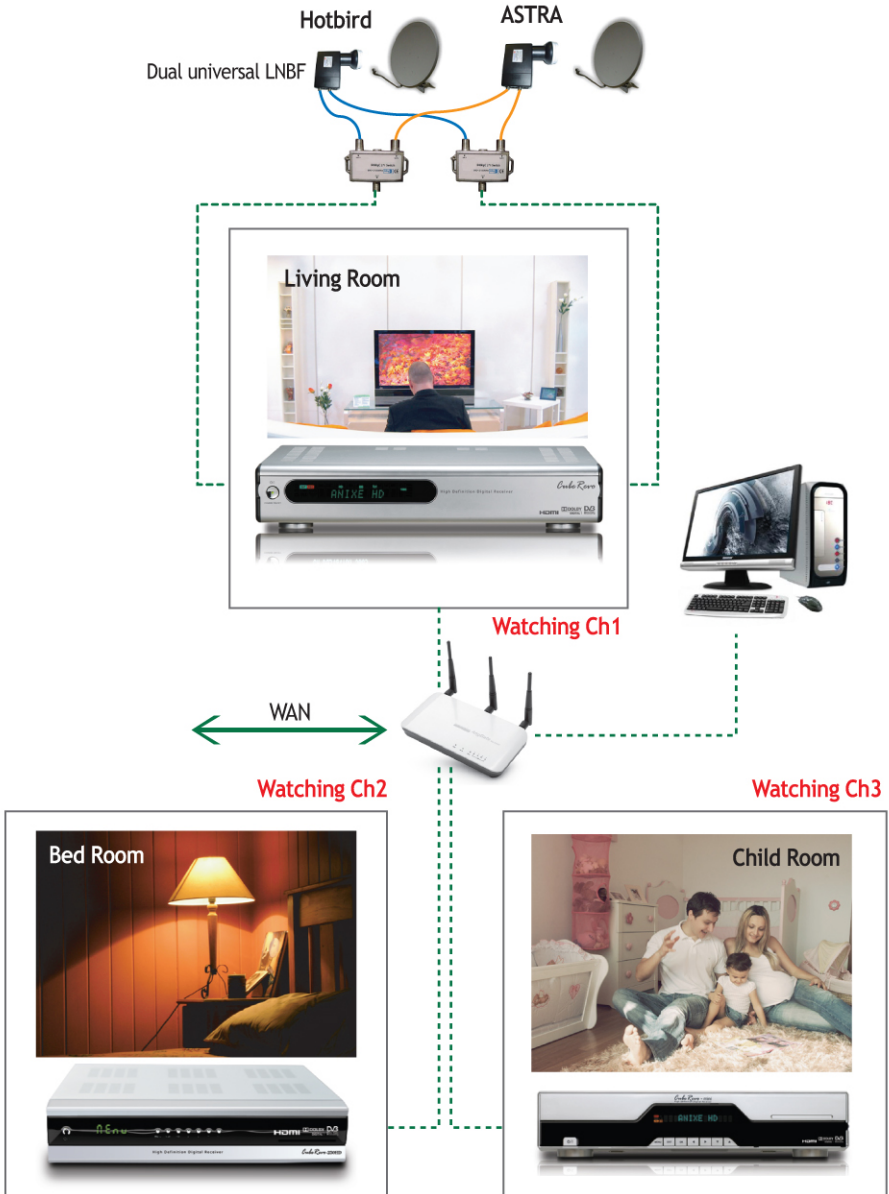


Example of the MultiRoom Service between CubeRevo series and PC



Multiroom Service

1. Server unit

In case of Server unit, it just needs press “Active”
No timeshift and No Recording while Multiroom service is running(working).



2. Client unit

2.1. Enter IP address of the server that runs already.



2.2. A pop-up menu of media list from server will be displayed in the client unit.



2.3. Select one option(ex, Recoded file) from list and then the contents list will be displayed.



The below function is available.

Timeshift

Recording

Channel Changing

Playing MP3 files, photo data, XVID files, and recorded files from the server

Limitation:

After completing the record, if you try to playback it, it takes around 3 ~4 minutes per 1GB file. In that case, the recorded file remains in HDD of both server and client.

CubeRevo with VLC Player Streaming function

1. Server side

1.1. Select proper option on the menu.



1.2. Cast mode: Choose Multicas or Unicast

If select Unicast, My IP address will be detected automatically.

In case of Multicas, default destination IP is 224.1.1.10 and it is editable.

Port: you can select any 4 digit and remember.

Protocol: Select UDP or RTP

Channel Name: select a channel from channel list on the pop up menu

Then, press "Activate"



Cast Mode - There are two types, "UniCast" or "MultiCast"

What is Multicast? It delivers a content of Server to multiple Client. The Server sends the media data to one of IP address for Multicast(from 224.0.0.0 to 239.255.255.255) then the client units get the media data from the multicast IP address.

Multicast IP address is in the range of 224.0.0.0 to 239.255.255.255.

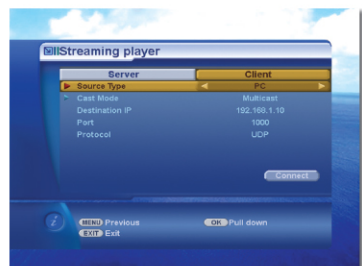
For example, the server sends media data to the IP address 224.1.1.2 / port 1234 then client also get data from the IP address 224.1.1.2 / port 1234.

It needs to be checked that multicast protocol is available in your network before use.

But, normally, the local network system supports multicast protocol

2. Client side

Setup option same as Server's option, then press "Connect"



* **Playback media:** (<http://www.videolan.org/mirror.php?file=vlc/0.8.6b/win32/vlc-0.8.6b-win32.exe>)

* **Mplayer :** <http://www.mplayerhq.hu>

* **Recording or Streaming to the PC**

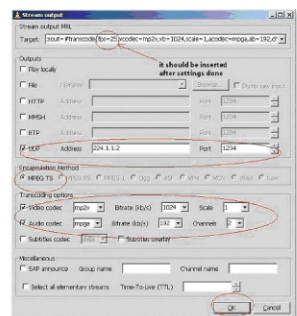
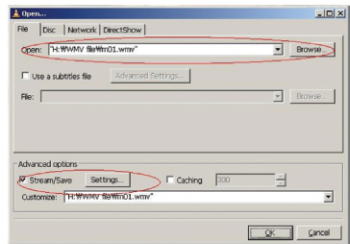
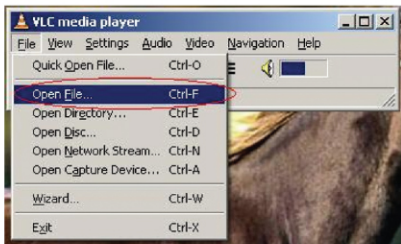
(<http://www5.mplayerhq.hu/MPlayer/releases/win32/MPlayer-1.0rc1-gui.zip>)

* **VLC:** <http://www.videolan.org>

VLC media file streaming from PC to CubeRevo series

(Download VLC player from <http://www.videolan.org>, and install it in your PC)

1. Run VLC,
2. “File” -> “Open File” ? “Browse” and Select a video file
3. Press “Stream/save” icon and then click “Settings”
4. Select “UDP” on the menu, put streaming IP address
5. Press OK to save the settings
6. Press OK again for exit

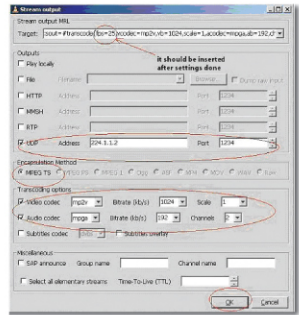
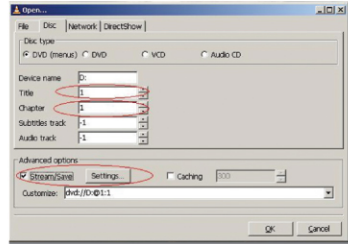


* In the “Target: box” you must type “fps=25” in it as below (Video Frame: PAL=25, NTSC=30)

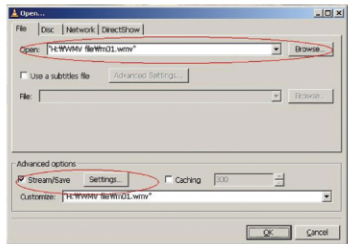
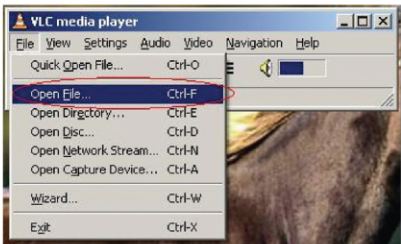
DVD Disc streaming from PC to CubeRevo series

1. Run VLC,
2. “File” -> “Open Disc” ? “Browse” and Select a video file
3. Press the “Stream/save” icon and then click “Settings” and following example
4. Select “UDP” on menu and put streaming IP address as below example

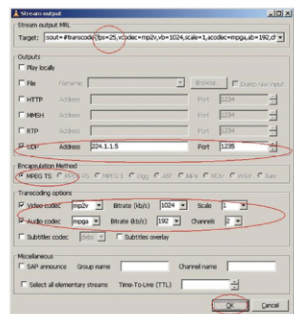
* In the "Target: box" you must type "fps=25" in it as below (Video Frame: PAL=25, NTSC=30)



PC media file streaming to CubeRevo series



Select proper A/V CODEC on transcoding option of stream out menu even if the format is different from embedded CODEC on CubeRevo.



Specific a channel of CubeRevo streaming to the PC.



In case of real IP address of CubeRevo



In case of multicast IP address for CubeRevo

