

TERA TERM

Open the file ttermpro.exe

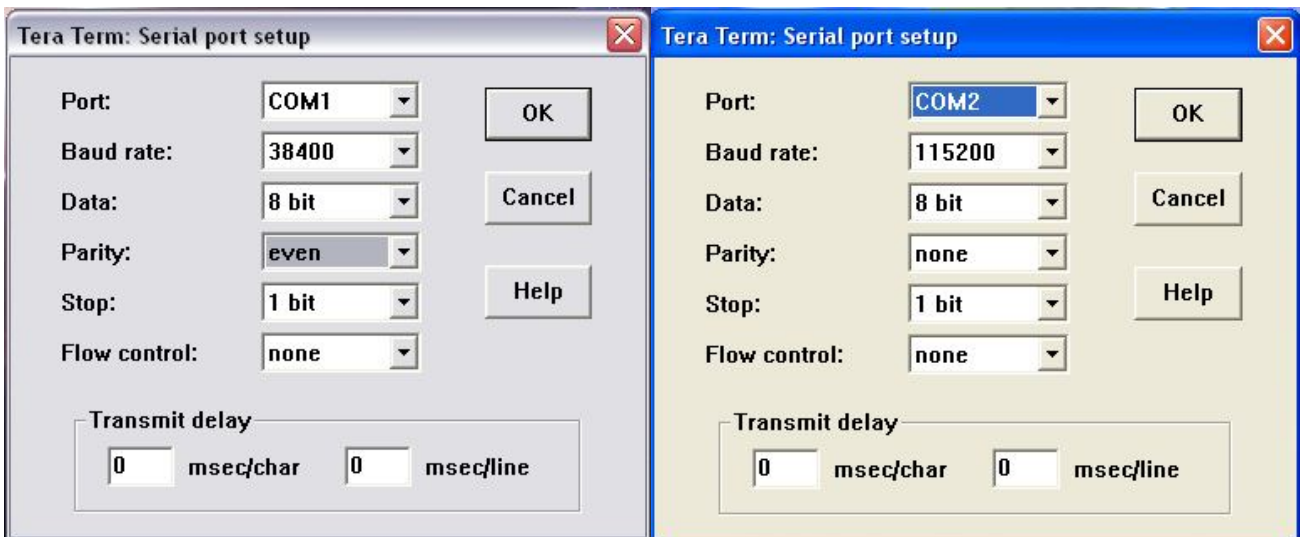
Preparation:

In the menu, select → Setup and then → Serial port setup.

Now adjust the settings as displayed in the window below
(adjust the COM port to your computer settings).

Settings for the old
Ten Haaft Receiver 2000-2006:

Settings for the new
Ten Haaft Receiver 2007-2010



Depending on how often you the old or new receivers programmed, you can save one of the above settings on → Setup → Save setup .. in the Tera Term folder and change these settings directly in the menü if the other model will programmed.

Programming:

Switch on the receiver. During switch-on, the receiver transfers several order signals: "999 Bootup: HWRESET/BOD" or "999 Bootup: REMOTE"

Should this not be the case, check if the receiver is switched on.

!!! STANDBY IS NOT SUFFICIENT !!!

While the receiver is booting, the following message is displayed:
[999 --- type "900" for help ---].

When the number 900 is typed in and this is confirmed with the Enter key, a text field containing the different commands is displayed. **(Caution!! The numbers typed in are NOT visible on the screen)**

```

999
999 Command List:
999 400 Dump memory: 400 <ofs> <len>
999 500 Channel List Interface
999 501 System Info
999 502 System State
999 503 Send IR command
999 504 Teletext Interface
999 505 System Settings Interface
999 900 Get command list
999 901 Enter IR mode
999 902 Enter sloader
999 903 Reboot
999 905 Enter bloader
999 999 Empty command
999

```

When the number "501" is typed in, a field containing the software version and the hardware components is displayed.

With the old Ten Haaft Receiver 2000-2006:

```

z.B.: 999 OS digenius tv P/3.33 2008-09-11 16:16
999 MOD ten Haaft T1.30o4, 2008-09-11 17:27
999 SER 1977-20t1f1o0-9793-7020
999 CTO NODEBUG SO_PROFESSIONAL SAA7121 ADV717X CXA2161 AK4364
UNI_RC
VLNB_OFF TELETEXT TEN_HAAFT UNI_FE VES1893 BSRU6 TAMC DVB_S
999 AK4364 NO
999 ADV717X YES (ADV7171)
999 SAA712X NO
999 LED YES
999 IIC 54 90 91 CA CB D0 D1 D2
999 FLASH 0004 22ba
999 FE STV0299_UNIVERSAL

```

With the new Ten Haaft Receiver 2007-2010:

```

z.B.: 999 OS STBOS P/3.41 [B] 2008-09-30 12:16
999 MOD ten Haaft EU/2.09 , 2008-10-14 12:10, 5.007
999 CTO NODEBUG SO_PROFESSIONAL UNI_RC TELETEXT UNI_FE DVB_S
DVB_C DVB_T
999 IIC 00 10 11 12 80 81 82 CA CB D0 D1 D2
999 FLASH 0001 2249 00000000

```

Typing in the number "903" will cause the receiver to reboot.

The number "902" makes the receiver boot into the programming status. When "900" is typed in, the following commands are listed:

```




999
999 Command List:
999 010 Load applet
999 020 Get version number
999 030 Boot firmware
999 040 Boot bloader
999 900 Get command list
999 999 Empty command
999


```

Now go to the menu and select → File → Send file.





Mark the option "Binary" with a check mark (**important!**) and open the .app file you would like to transfer:


With the old Ten Haaft Receiver 2000-2006:

e.g.:  th_all_2010-07-27.cxt.app +  Sub_3008.app +  firmware-fre-dut_OYSTER140o8.app

or  firmware-fre-dut_CARO140c8.app

With the new Ten Haaft Receiver 2007-2010:

e.g.:  bloader-2008-11-26.app +  firmware_RX_213.app +  firmware_TH_213b.app +  Sub_5010.app +

 th_5000_2010-07-27.cxf.app

Now the programming process is taking place. After it has ended with "998 Expecting command", you can load the next .app file.

To help you keep track during the entire updating process, there is an output line which applies to each of the files listed above.

"999 Image firmware..." → bloader-2008-07-30.app or firmware_RX_?.app
"999 Image TH2 App..." → firmware_tH_?.app
"999 Flashing Mega(16)" → Sub_50???.app
"999 Image channel list..." → tH_5000_?????.cxf.app

Now and again, errors may occur during the programming process; the following message will then be displayed:

"951 Syntax error on input.
998 Expecting command."

Should this be the case, abort the process, type in "900" and press the enter key to restart the process.

After you have transferred all files, type in "030" and press the enter key; the receiver will now boot again and you can check the software on the receiver via the television.